

21015 – Nakajoko, Tokamachi City

For Sale

Tokamachi

Garage; close to schools; close to onsen; snow-melting roof

Comments

This residence is just a short 15 minute drive away from the city center.

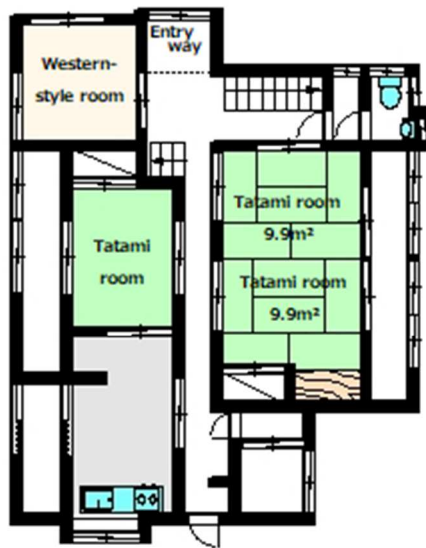
It is surrounded by nature and neighbors and situated between two major roads (Routes 117 and 461), which makes for a convenient location close to convenience stores and the post office. Most major facilities are just a 10 minute drive, and schools are particularly close so the commute will be short.

This place has a lot of rooms, which means a lot of potential!

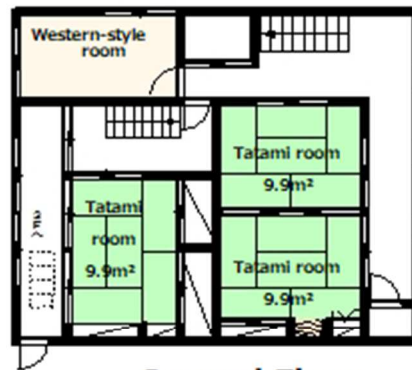
Reference Number	21013
Date Available	March 14 th , 2022
Type	For Sale
Price	6,350,000yen
Layout	8DK
Year Built	1960
Area	Tokamachi
Location	Nakajoko, Tokamachi City, Niigata Prefecture (see map)
House Size	170.94 m ²
Land Size	405.19 m ²
Parking	Garage: 1 space Uncovered Parking: 2 spaces
Features	Electricity: Installed (contract needed) Gas Hookups: Installed (LPG contract needed) Plumbing: Part of the city water system Bath: Gas Toilet: 1 Western-style toilet Sewer system: No inside hookups
Roof-top Snow Removal	Unneeded, roof has a melting element
Nearby Facilities	Nakajo Preschool (approx. 0.4km) Nakajo Elementary School (approx. 0.1km) Nakajo Junior High School (approx. 0.9km)

	<p>Tokamachi City Hall (approx. 5.0km)</p> <p>Oofuchi Clinic (approx. 0.4km)</p> <p>Tokamachi Fire Station (approx. 2.9km)</p> <p>Nakajo Police Station (approx. 0.6km)</p> <p>Uonumanakajo Station (Iiyama Line) (approx. 0.8km)</p> <p>Nakajo Shogakkou Mae Bus Stop (approx. 0.2km)</p> <p>JA Bank Kitahara Branch (approx. 1.8km)</p> <p>Uonumanakajo Post Office (approx. 0.5km)</p> <p>Akashi no Yu Public Bath (in Kinare) (approx. 3.6km)</p>
Inquiries	<p>Tokamachi City Policy Planning Division</p> <p>Phone: 025-755-5137 (Weekdays 8:30am – 5:15pm)</p> <p>Email: t-kikaku@city.tokamachi.lg.jp</p>





First Floor



Second Floor

* Measurements are approximate.









