

24002– Higashi shimogumi, Tokamachi City

For Sale

Tokamachi

Garage

Comments

The property is located at the end of a mountain road in the Gejo district, about 20 minutes by car from downtown Tokamachi, Niigata Prefecture.

Surrounded by lush greenery, the property is in a rich of nature, and “Ubusuna House,” a work of the Echigo-Tsumari Art Field Triennale, is about a 5-minute drive away.

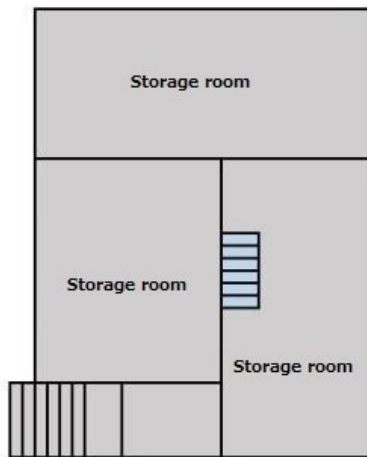
The second floor is divided into Japanese-style rooms and the third floor into Western-style rooms, making the layout easy to use for different purposes.

It is also recommended for those who want to spend time in a quiet environment.

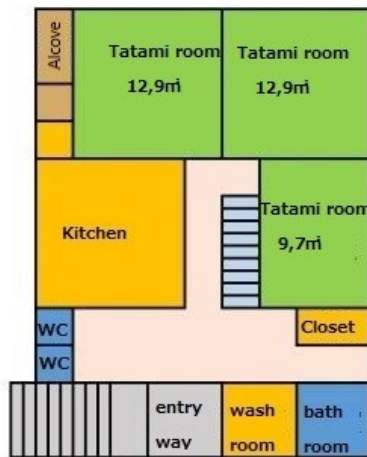
Reference Number	24002
Date Available	May 16 th , 2024
Type	For Sale
Price	1,000,000yen
Layout	7DK
Year Built	1985
Area	Tokamachi
Location	Higashi shimogumi, Tokamachi City, Niigata Prefecture
House Size	223.05 m ²
Land Size	459.76 m ²
Parking	Garage: 1 space Uncovered Parking: 2 spaces
Features	Electricity: Installed (contract needed) Gas Hookups: Installed (LPG contract needed) Plumbing: rural water system Bath: Kerosene Toilet: 2 Western-style toilets, night soil collecting needed Sewer system: not connected
Roof-top Snow Removal	Snow removal needed
Nearby Facilities	Mutsumi nursery school (approx. 4.5 km) Gejo Elementary School (approx. 3.8 km) Gejo Junior High School (approx. 3.8 km)

	<p>Tokamachi City Hall (approx. 13.2 km)</p> <p>Yamaguchi Clinic (approx. 4.1 km)</p> <p>Tokamachi Fire Station (approx. 10.5 km)</p> <p>Tokamachi Police Station Gejo branch (approx. 3.7 km)</p> <p>Gejo Station (JR Iiyama line approx. 3.9 km)</p> <p>Taira Bus Stop (approx. 0.4 km)</p> <p>JA Bank Kitahara Branch (approx. 6.2 km)</p> <p>Gejo Post Office (approx. 4.0 km)</p> <p>Senju Sen'nen no yu onsen (approx. 11,6 km)</p>
Inquiries	<p>Tokamachi City Policy Planning Division</p> <p>Phone: 025-755-5137 (Weekdays 8:30am – 5:15pm)</p> <p>Email: t-kikaku@city.tokamachi.lg.jp</p>

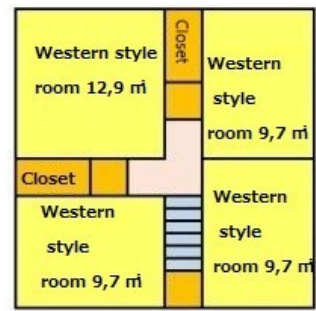




1st floor



2nd floor



3rd floor









